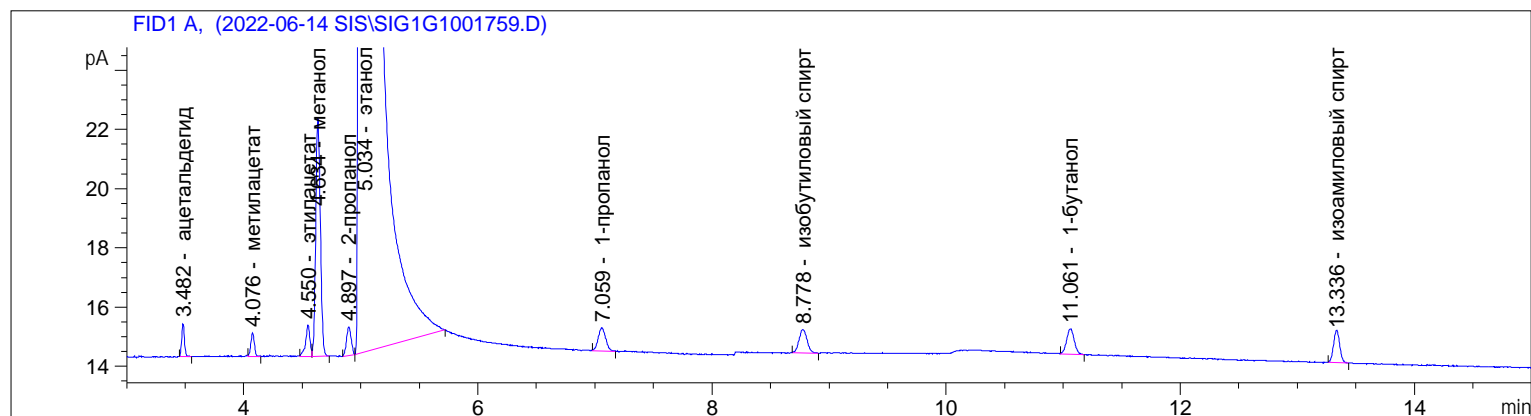


Sample Name: 2

```

=====
Acq. Operator   :
Acq. Instrument : Instrument 1                Location : Vial 101
Injection Date  : 14.06.2022 15:19:06      Inj      : 1
                                           Inj Volume : 1 µl

Acq. Method     : D:\CHEM32\1\METHODS\VODKA_2019.M
Last changed    : 08.06.2022 14:22:28
Analysis Method : C:\CHEM32\1\DATA\2022-06-14 SIS\SIG1G1001752.D\RUN.M
Last changed    : 20.06.2022 13:18:05
                 (modified after loading)
Method Info     : 25.06.2019 H2
  
```



```

=====
Internal Standard Report
=====
  
```

```

Sorted By           :      Signal
Calib. Data Modified :      20 June 2022 г. 13:18:05
Multiplier:         :      1.0000
Dilution:           :      1.0000
Use Multiplier & Dilution Factor with ISTDs
  
```

Sample ISTD Information:

ISTD #	ISTD Amount мг/л безво	Name
1	7.89270e5	этанол

Signal 1: FID1 A,

RetTime [min]	Type	ISTD used	Area [pA*s]	Amt/Area ratio	Amount мг/л безво	Grp	Name
3.482	BB	1	1.87640	1.56500	12.02309		ацетальдегид
4.076	BB	1	1.61751	1.76261	11.67293		метилацетат
4.550	BV	1	2.73721	9.93171e-1	11.13037		этилацетат
4.634	VB	1	22.07565	1.41378e-4	1.27783e-2		метанол
4.897	BV	1	2.66154	9.40935e-1	10.25342		2-пропанол
5.034	VB S I	1	1.92774e5	1.00000	7.89270e5		этанол
7.059	BB	1	3.41357	7.03202e-1	9.82802		1-пропанол
8.778	BB	1	3.85656	6.29313e-1	9.93674		изобутиловый спирт
11.061	BB	1	3.86672	6.20938e-1	9.83031		1-бутанол
13.336	BB	1	4.02269	5.98564e-1	9.85836		изоамиловый спирт

Sample Name: 2

Totals without ISTD(s) : 84.54602

1 Warnings or Errors :

Warning : Calibration warnings (see calibration table listing)

=====

*** End of Report ***